



# Uckfield Millennium Green Newsletter June 2024



## Facebook / Instagram Posts

The following is a compilation of our posts since the April newsletter.

## June Work Party



For our June event we held an Explore the Green walk. We looked at all the different areas of the Green and explained a few of the features such as how the pits are now managed to create different habitats and the bedhead oak!

We'll be holding another similar walk in August.

## 2024 Work Party Dates

Further Saturday work party dates for 2024 will be 17th Aug (tbc), 12th Oct and 7th Dec.

## Spring Bluebells



Lovely to see the bluebells emerging on the Green today and our first early purple orchid was also spotted.

Between the bursts of rain, the clouds cleared and made for some great views.



## Apple Blossom



Whilst working on the fence around the Picnic & Play Area this week, we had to get right in amongst this lovely apple blossom.

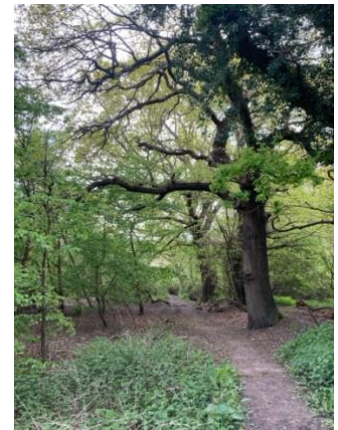
There should be a good crop of apples later in the year to go with the blackberries and sloes.

## Oak Passage



The newly named Oak Passage on the western boundary. A walk past nineteen large oak trees that mark the boundary with Ridgewood House.

The trees are significant due to their age and two in particular are registered as veteran trees on the Ancient Tree Inventory.



## Tranquil Green



With the Spring sunshine the Green is looking lovely and a very tranquil place to sit and watch the world go by.



## Woodchip Fungi

There's been a lot of activity on the woodchip pile recently, with a number of fungi make an appearance in the hot weather. We've been using the woodchip to mulch our new trees this Spring and will be adding more woodchip to the woodland paths later in the year.





## Buttercup Meadows



Lovely to see the meadows shimmering with the yellow buttercups.

Some say the buttercups represent joy, youth, purity, happiness and friendship, others say fairies like to use them to make the roofs of their houses!

## First Orchids

The first Common Spotted Orchids are now showing, and whilst common in woodlands and hedgerows, we still love to see them for their colourful display.



## Millennium Feature



The Millennium Green Feature reflects the legacy of the three large clay pits on the Green that used to serve the Benj. Ware & Sons brickworks located where the Ridgewood Industrial Estate is now situated.



The base used to be an old engine shed for the small railway that hauled the clay up the hill and the pathed terrace now has one of the best panoramic views on the Green. The Feature had its annual tidy up recently, but we are hoping to get it properly refurbished for our 25th anniversary next year.

## Meadow Grasses



The meadow grasses are now growing tall and towering over the small colourful flowers.



With the sun and lovely blue skies as a backdrop, the meadows are shimmering.



Our favourite photo from the last few weeks



Due to all the rain, the meadows have been very lush this year, the grasses are 4ft tall in some areas. But when you get up close to have a look, the variety of small meadow flowers is lovely.

The yellow Birdsfoot Trefoil is very bee and butterfly friendly being very rich in nectar.

In folklore the white flowered Lessor Stitchwort was regarded as a “thunder” plant as picking was likely to induce thunder!

For further information, please contact us at:

[info@uckfieldmillenniumgreen.co.uk](mailto:info@uckfieldmillenniumgreen.co.uk)  
[www.uckfieldmillenniumgreen.co.uk](http://www.uckfieldmillenniumgreen.co.uk)

